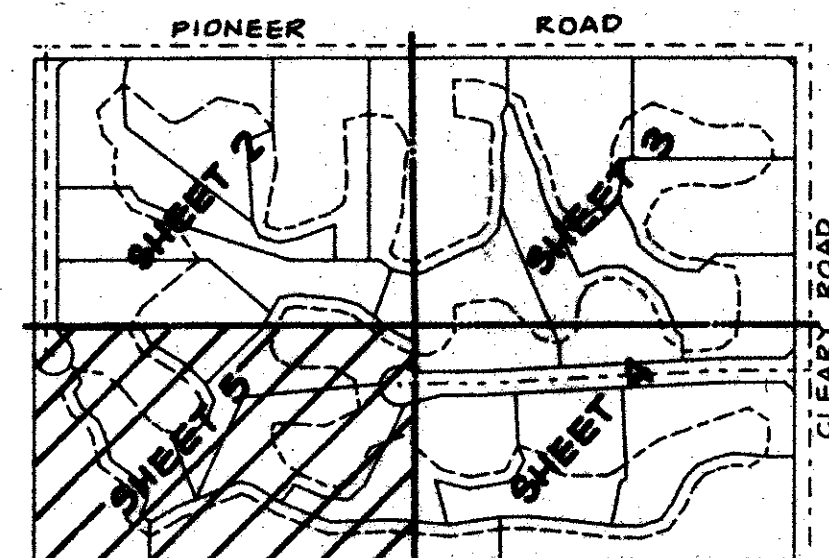
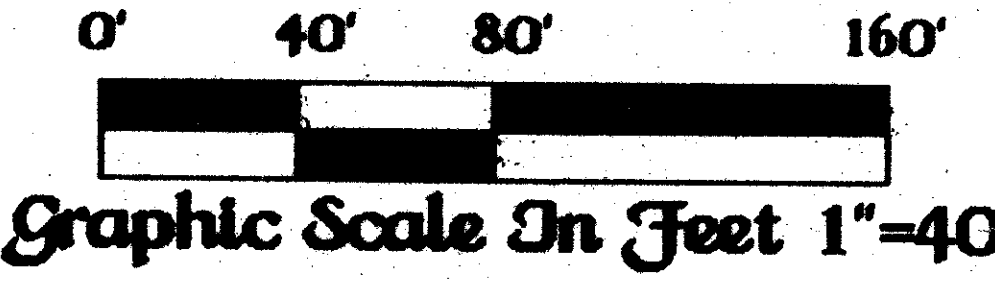
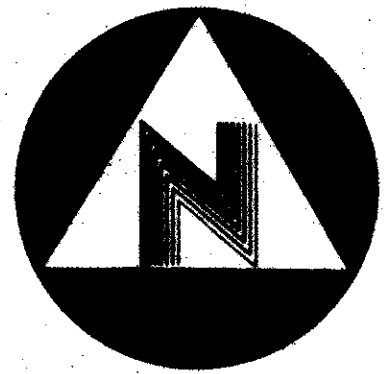
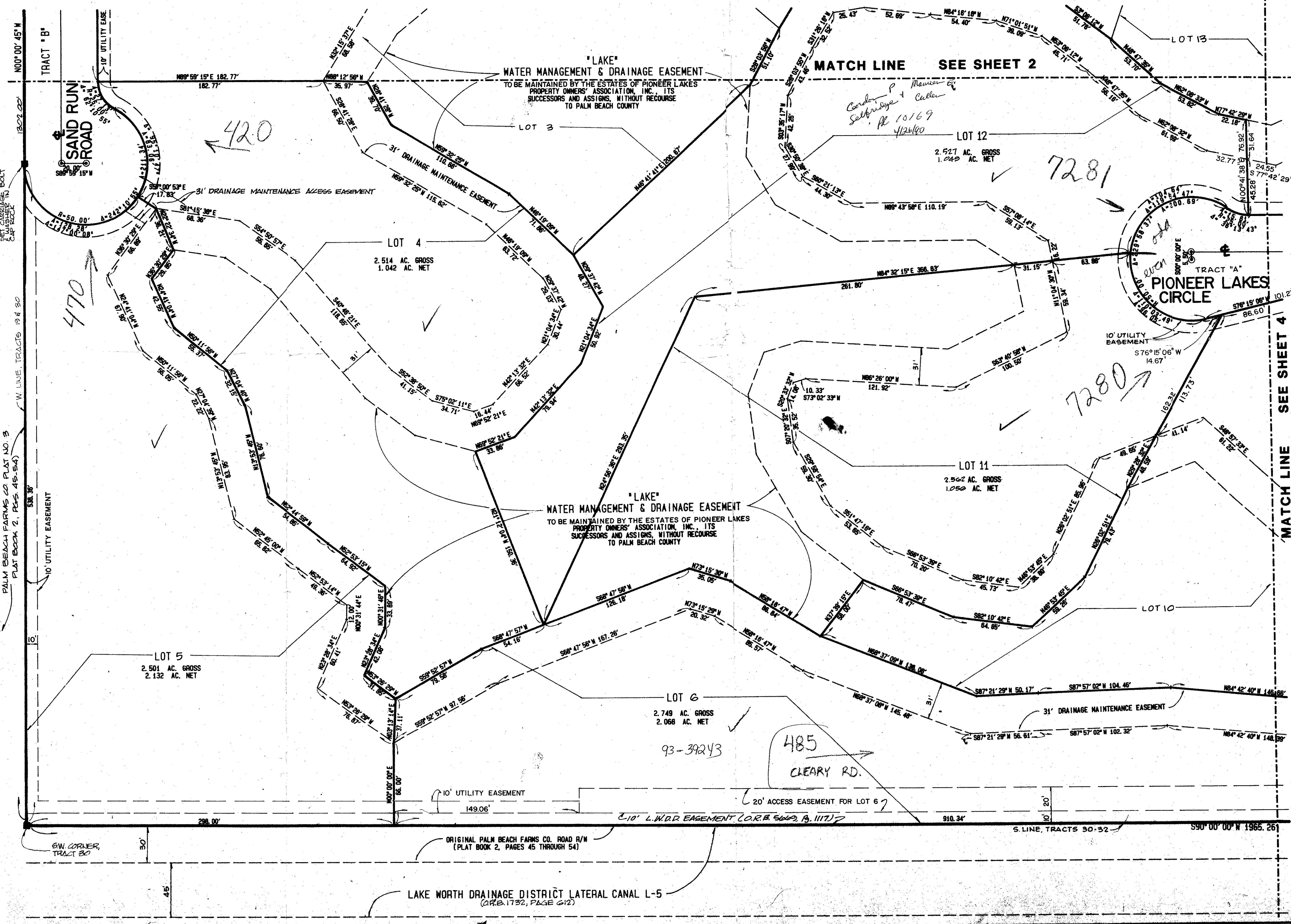


THE ESTATES OF PIONEER LAKES

June, A.D., Nineteen Hundred Eighty Seven

Sheet Five Of Five

State of Florida )
County of Palm Beach )
This Plat was filed for record at this day of A.D., 1987, and duly recorded in Plat Book on Pages thru
John B. Dunkle, Clerk of the Circuit Court.
By Deputy Clerk



KEY MAP N.T.S.

60/123 0368-002

This instrument was prepared by Wm. R. Van Campen, R.L.S., in and for the offices of Bench Mark Land Surveying & Mapping, Inc., 4152 West Blue Heron Boulevard, Suite 121, Riviera Beach, FL 33404

BENCH MARK LAND SURVEYING & MAPPING, INC.
THE ESTATES OF PIONEER LAKES
DATE: JUNE '87
SCALE: 1"=40'